



Print & Apply Systems

- ✓ Real time automatic print and apply system for any type of secondary group packaging (cases, packs, bundles, etc.).
- ✓ Capacity up to 90 labels/min.
- ✓ 3.8" touch screen for system parameters configuration.
- ✓ Digital screen for easier pressure regulation.
- ✓ Numeric Flow regulation indicator.
- ✓ Compact, robust, industrial.
- ✓ Compatible with all OEM print engines on the market. In compliance with GS1 International codification and traceability standards (grade A and B for printed barcodes).

APL 35s

Print & Apply Systems



Print & Apply Systems APL 35s were technologically designed to fulfill the most strict market demands on traceability and reliability; complying with GS1 international requirements for real time printing and labeling.

This Label Printer Applicator supports reel of label with external diameter of up to 300mm (11,8"). 350mm (13,8") optional .

Modular concept of APL 35s allows the application of label on packaging in many ways:

- ✓ Top
- ✓ Side
- ✓ Frontal
- ✓ Rear
- ✓ Corner wrap
- ✓ Double panel

Designed to meet most exigent requirements on speed and labeling capacity. Including printing and applying of label with variable information in real time. With the capacity of up to 90 cpm (cases per minute) with pneumatic application and up to 180 cpm with electric application.

Easy integration into any production line by using only one connector with all I/O integrated. Thanks to its high connectivity capacity APL 35s Systems can be easily integrated with any ERP, DB, MES, WMS, using UBS LabMan 4.0 middleware as a connection tool.

This label application system is equipped with touch screen control panel for system parameters settings.

APL 35s is fulfilling all GS1 international codification and traceability standards (achieving grade A and B for printed barcodes).

United Barcode Systems Print & Apply technology is a market reference for labeling individual packs, cartons and cases.

Do you need to add some advanced functionalities to APL 35s? APL 35si is our premium equipment with special features →



APL 35s y 35si

Print & Apply Systems
 Estability & Reliability

FEATURES

ELECTRIC

PLC
 INTERFACE
 POWER SUPPLY
 CE REGULATION

PNEUMATIC

PRESSURE REGULATION CYLINDER APPLICATION
 VACUUM SWITCH / PRESSURE SWITCH
 AIR FLOW REGULATOR BLOWER TUBE
 AIR FLOW REGULATOR VACUUM
 ENTRY CONSIGNMENT

MECHANICAL

EXTERNAL REEL DIAMETER (MAX.)
 MAX. LABEL WIDTH
 UNWINDER
 REWINDER
 BACKING PAPER EXTRACTION SYSTEM
 MEDIA COVER
 HARSH ENVIRONMENTS FULL COVER
 CABIN PROTECTOR FOR CONNECTION PANEL

COMMUNICATIONS

ALARM BEACON
 ETHERNET
 LOW LEVEL MEDIA
 PRESSURE SWITCH ENTRY
 STANDARD OUTPUTS CONNECTOR
 INTEGRATOR CONNECTOR

LABEL APPLICATORS

PNEUMATICS

SPEED

ELECTRICS

SPEED

PRINTING MODULE

PRINT ENGINE
 PRINTING RESOLUTION
 POWER SUPPLY
 INTERFACE AND CONNECTIVITY
 OPERATING TEMPERATURE
 HUMIDITY

APL 35s

APL 35si

STANDARD	SIEMENS / ALLEN BRADLEY
MONOCHROME TOUCH SCREEN 3,3"	COLOR TOUCH SCREEN 4,3"
100 - 240 ±10 VAC, 50 / 60Hz	
SECURITY LEVEL PLc (EMERGENCY STOP)	



DIGITAL REGULATION

STANDARD INDICATOR (ANALOGICAL)

X (OPTIONAL)



300MM (11,8"), 350MM (13,8") OPTIONAL

170MM (6,69")

PRINTER INPUT TENSIONER

MOTOR WITH CLUTCH

CLIP

X (OPTIONAL)

X (OPTIONAL)

X (OPTIONAL)

EXTERNAL

X



PLC & SCREEN COMMUNICATION

X (OPTIONAL)

7 SIGNALS

X (OPTIONAL)

MULTISIGNAL

UP TO 90 LABELS/MIN*

UP TO 180 LABELS/MIN*

ZEBRA, SATO, HONEYWELL...

203 - 300DPI

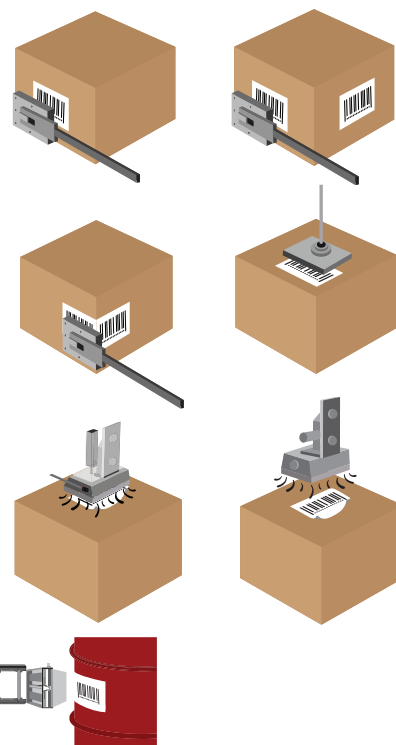
100 - 240 ±10 VAC, 50 / 60Hz

ETHERNET, USB, RS232

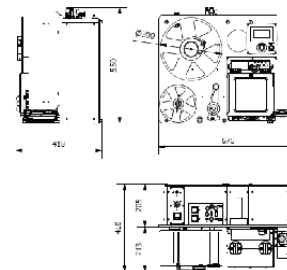
FROM 5°C TO 40°C

BETWEEN 20% - 85% NON-CONDENSING

Pneumatic Applicators



Electric Applicators



According to UBS internal policy of continuous improvement, our products specifications are subject to change without notice.

United Barcode Systems

Labeling, Coding & Marking



V.M.S TECHNICAL & TRADE CO., LTD

Address: 3D4, Quarter 1, Thanh Xuan Ward, District 12, Ho Chi Minh City
 Tel: (+84) 28 37166003 ; Fax: (+84) 28 37166012
 Website: www.vmsco.vn ; Email: marketing@vmsco.vn

Ha Noi Branch: TT3 - 38 - 39 Dau Gia Town, Tu Hiep Commune, Thanh Tri District, Ha Noi
 Tel: (+84) 24 35666691 ; Fax: (+84) 24 35666697
 HelpDesk: 0909 238 806 ; Hotline: 1900 54 54 72